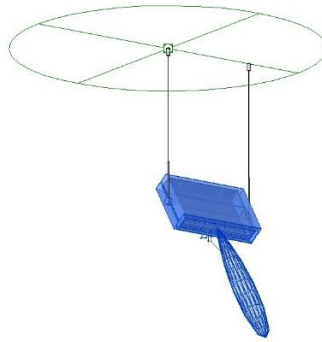


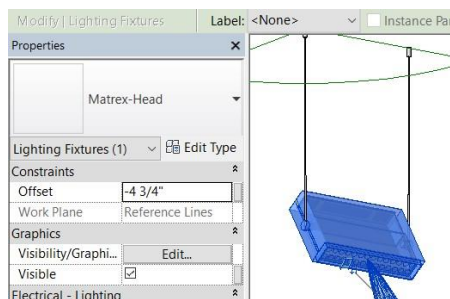
Changing the photometric web file (ies)

1.0 The luminaire has a nested family – Matrex-Head.rfa. The light source is placed in this nested family.

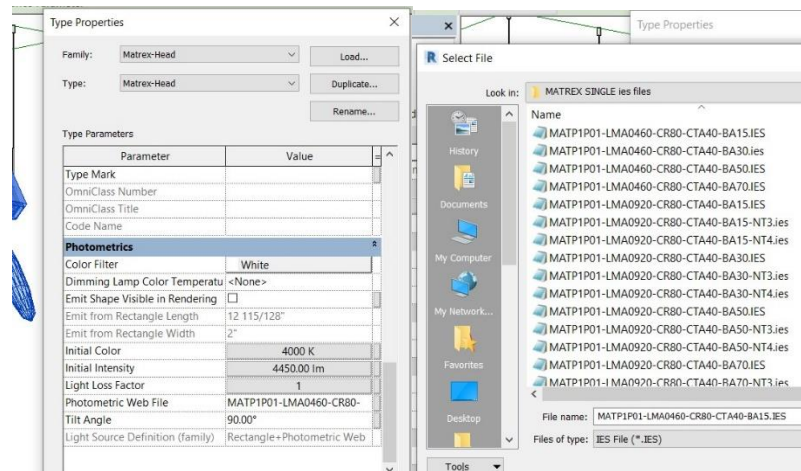
2.0 To change the ies files, open the fixture family and select the luminaire.



3.0 Select **Edit Type**.



4.0 Under group parameter **Photometrics**, click in value column beside the **Photometric Web File** parameter. The **Select File** Menu appears. Locate the desired ies file, select it, and click Open. Click OK. Update the Initial Color as well as the Initial Intensity values.



5.0 Save the Revit Family with a different file name.

6.0 Load the **Revit** family into a Revit Project file (**.rvt**).

